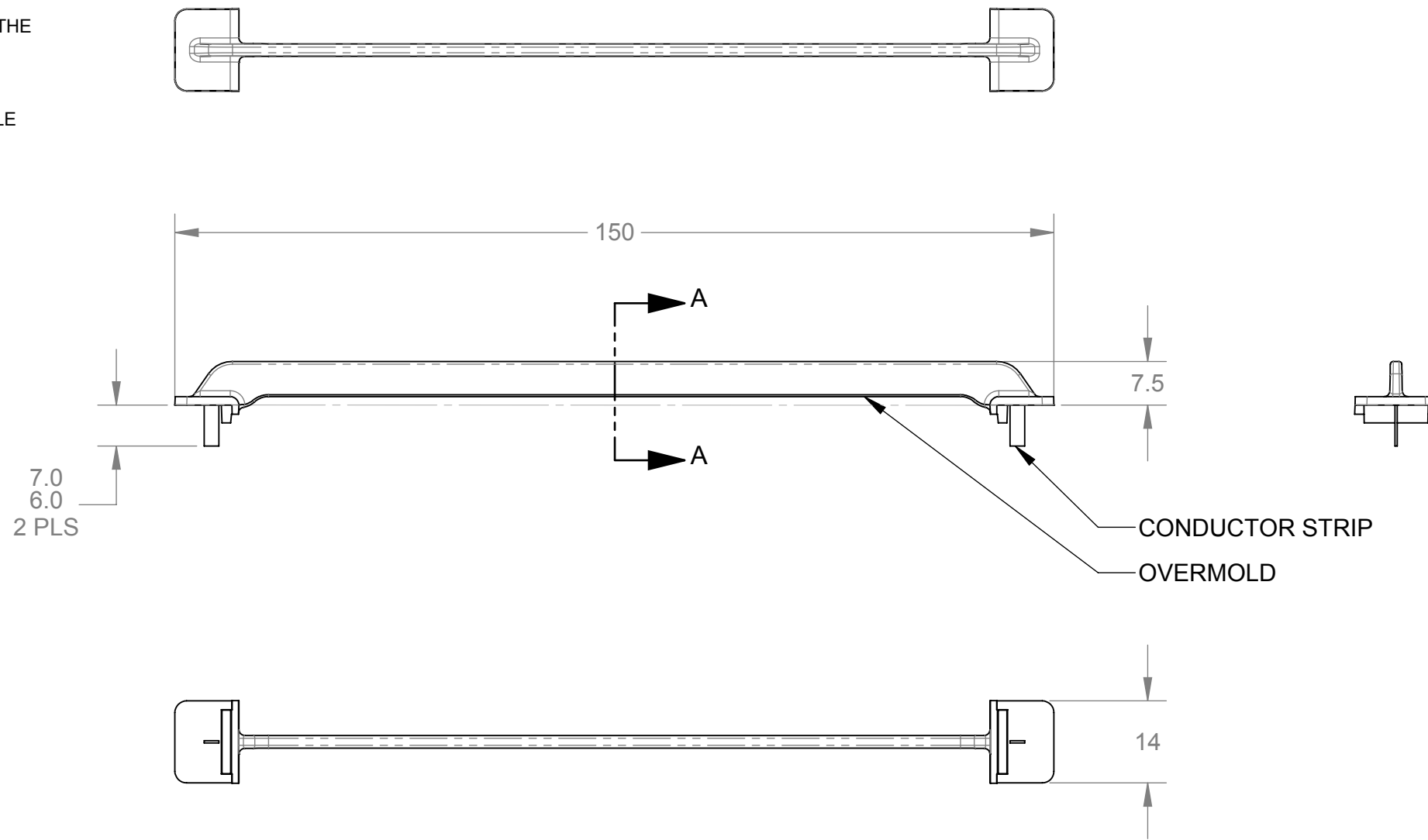
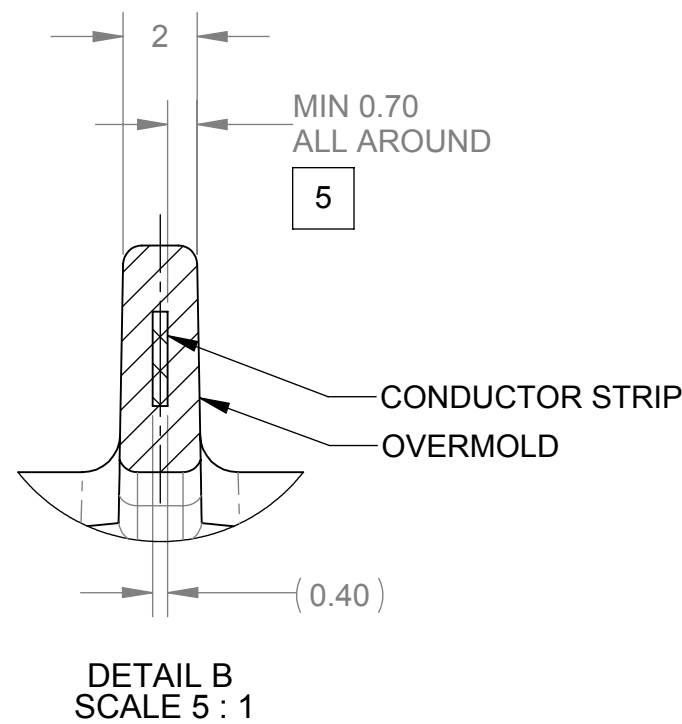
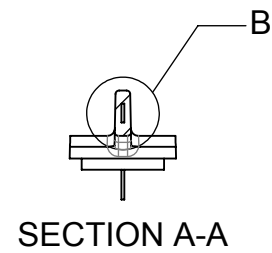


NOTES:

1. MATERIAL:
 - CONDUCTOR STRIP: COPPER ALLOY 110, SHIM STOCK
 - OVERMOLD: POLYURETHANE PT8958
2. THIS IS A SUPPLEMENTAL DETAIL DRAWING AND IS TO BE USED IN CONJUNCTION WITH 3D PART MODEL FILE TO MANUFACTURE AND INSPECT THE FABRICATED PART. IN CASE OF CONFLICT BETWEEN MODEL FILE AND A DIMENSION ON THIS DRAWING, THE DIMENSIONS WILL TAKE PRECEDENCE.
3. ALL FEATURES NOT DIMENSIONED ARE DERIVED FROM THE PART MODEL FILE DATABASE.
4. REMOVE ALL BURRS AND SHARP EDGES
5. INSPECTION METHOD TO BE DETERMINED BY SENTINELLE MEDICAL



CONFIDENTIAL

<p>MATERIAL RESTRICTIONS: ALL PARTS AND ASSEMBLIES SUPPLIED TO THIS SPECIFICATION SHALL BE IN FULL COMPLIANCE WITH SMI-0564 - MATERIAL PROHIBITIONS AND RESTRICTIONS.</p>			<p>HOLOGIC</p> <p>SENTINELLE MEDICAL, A DIVISION OF HOLOGIC 555 RICHMOND STREET WEST TORONTO, ON M5V 3B1</p>															
<p>UNLESS OTHERWISE SPECIFIED DO NOT SCALE DRAWING INTERPRET IN ACCORDANCE WITH ASME Y14.5M-2009 DIMENSIONS ARE IN mm TOLERANCES APPLY AS SHOWN BELOW</p> <table border="0"> <tr><td>0-10</td><td>± 0.1</td></tr> <tr><td>10-50</td><td>± 0.2</td></tr> <tr><td>50-100</td><td>± 0.3</td></tr> <tr><td>100-300</td><td>± 0.4</td></tr> <tr><td>300-1000</td><td>± 0.5</td></tr> <tr><td>ANGLES</td><td>± .5°</td></tr> <tr><td>SURFACE ROUGHNESS</td><td>0.8 µm</td></tr> </table>			0-10	± 0.1	10-50	± 0.2	50-100	± 0.3	100-300	± 0.4	300-1000	± 0.5	ANGLES	± .5°	SURFACE ROUGHNESS	0.8 µm	<p>THIS DOCUMENT CONTAINS PROPRIETARY DATA OF HOLOGIC INC. NO DISCLOSURE, REPRODUCTION, OR USE OF ANY PART THEREOF MAY BE MADE EXCEPT BY WRITTEN PERMISSION FROM HOLOGIC.</p>	
0-10	± 0.1																	
10-50	± 0.2																	
50-100	± 0.3																	
100-300	± 0.4																	
300-1000	± 0.5																	
ANGLES	± .5°																	
SURFACE ROUGHNESS	0.8 µm																	
<p>THIRD ANGLE PROJECTION</p>			<p>PROPOSED</p>															
<p>DESCRIPTION CONDUCTOR RIB, 3CH BX COIL</p>			<p>PART/ASSEMBLY NUMBER: FAB-11996</p>															
<p>ENGINEER: J. JANKOWSKI</p> <p>AUTHORED BY: J. JANKOWSKI</p> <p>DRAFTED BY: J. JANKOWSKI</p> <p>REVISION RELEASE DATE:</p>		<p>DATE: N/A</p> <p>30MAY2014</p> <p>30MAY2014</p>		<p>SIZE: B</p> <p>SCALE: 1:1</p>														
<p>REVISION RELEASE DATE:</p>			<p>DRIVING NUMBER: RR-XXXXX</p> <p>MODEL FILENAME: FAB-11996 - CONDUCTOR RIB, 3CH BX COIL</p>															
			<p>REV: XXX</p> <p>SHEET 1 OF 1</p>															