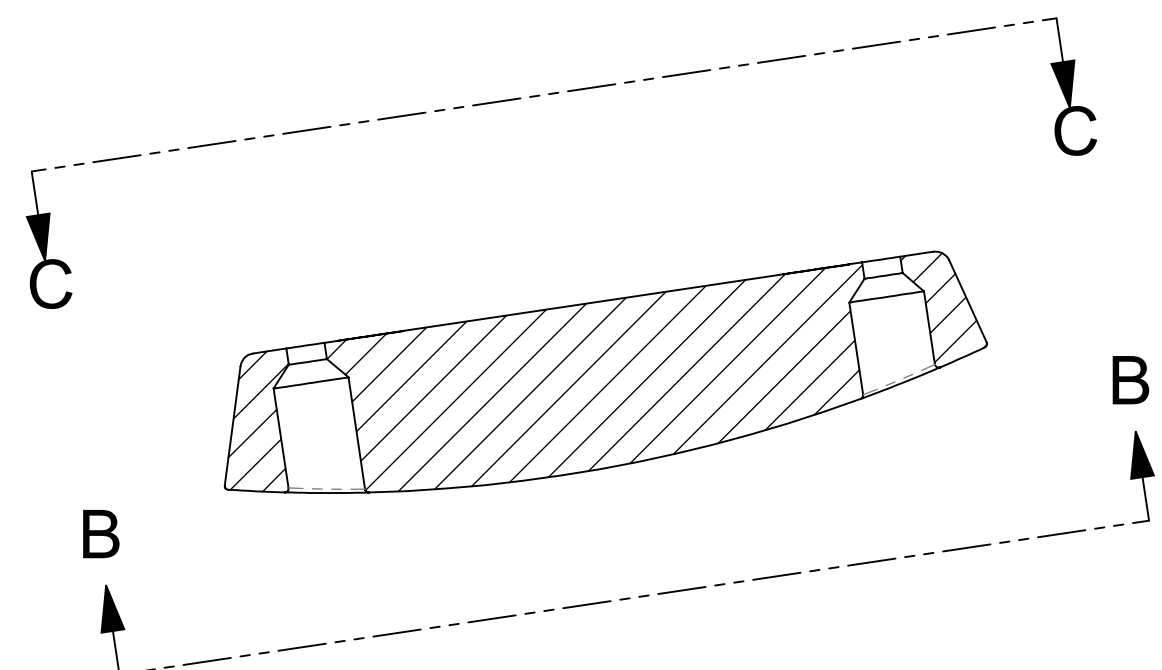
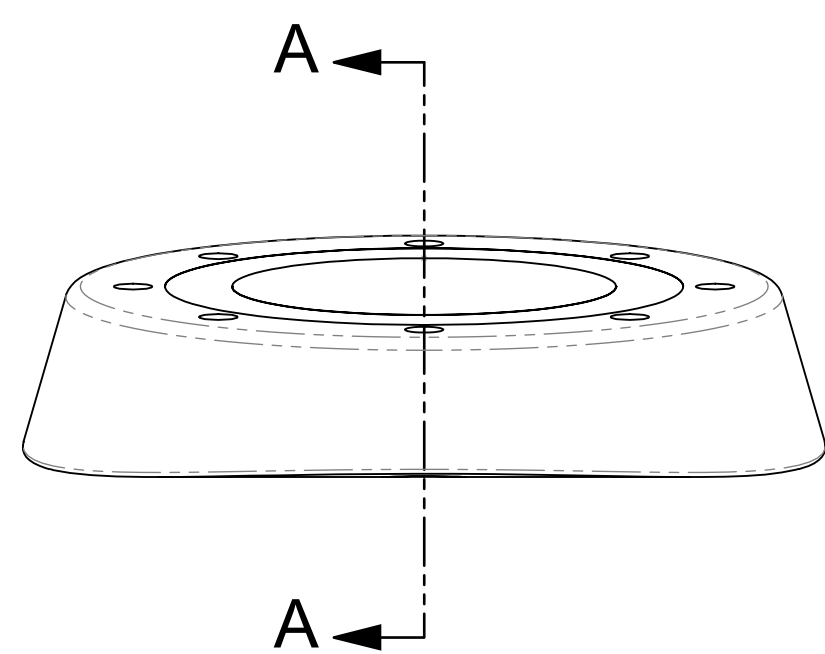
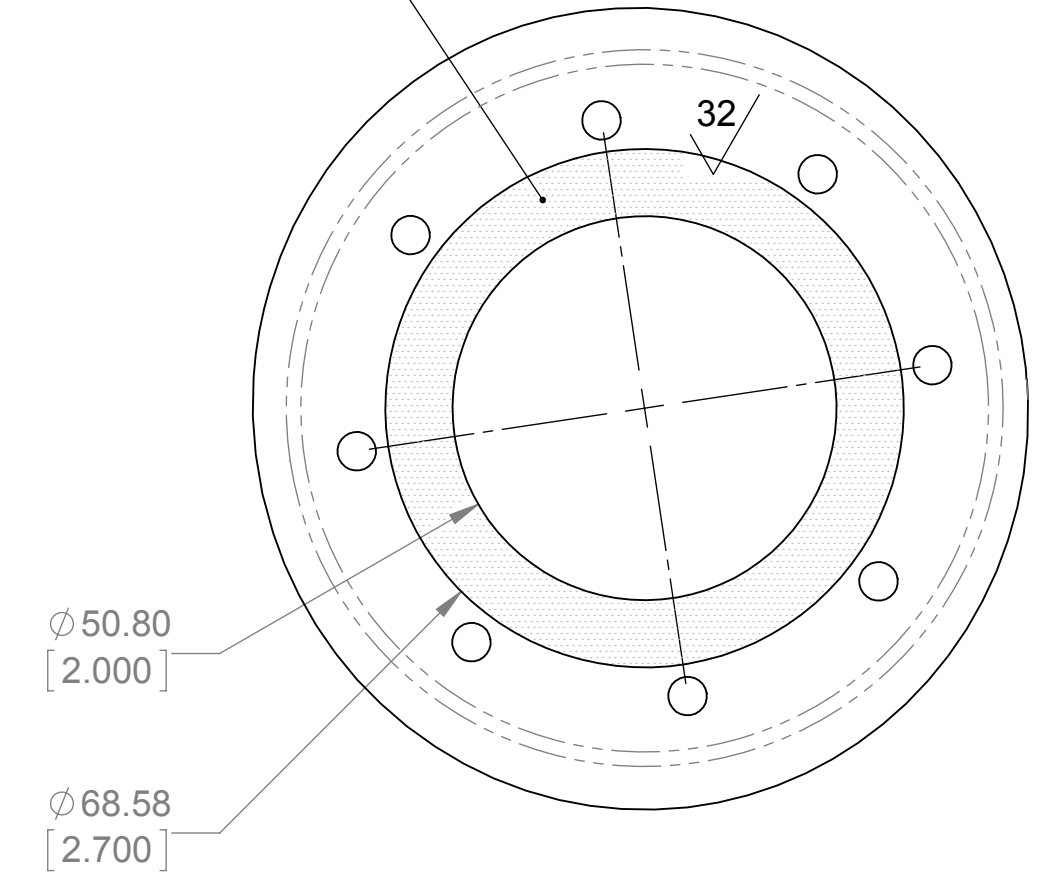


NOTES:
 1. MATERIAL: SLS NYLON 12 GF

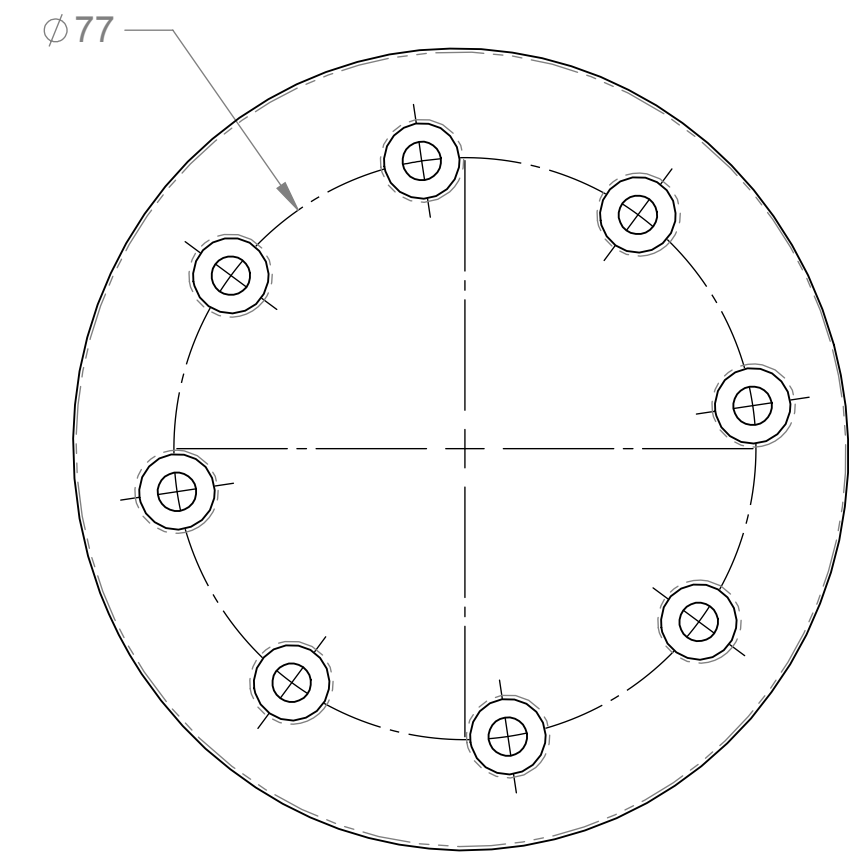


SECTION A-A

SURFACE FINISH MUST MEET SPECIFICATION IN THIS AREA BUT MAY EXTEND BEYOND



VIEW C-C



VIEW B-B

CONFIDENTIAL

MATERIAL RESTRICTIONS: ALL PARTS AND ASSEMBLIES SUPPLIED TO THIS SPECIFICATION SHALL BE IN FULL COMPLIANCE WITH SM-0564 - MATERIAL PROHIBITIONS AND RESTRICTIONS. UNLESS OTHERWISE SPECIFIED THIS DOCUMENT CONTAINS PROPRIETARY DATA OF HOLOGIC INC. NO DISCLOSURE, REPRODUCTION, OR USE OF ANY PART THEREOF MAY BE MADE EXCEPT BY WRITTEN PERMISSION FROM HOLOGIC.		HOLOGIC SENTINELLE MEDICAL A DIVISION OF HOLOGIC 555 RICHMOND STREET WEST TORONTO, ON M5V 3B1	
DO NOT SCALE DRAWING INTERPRET IN ACCORDANCE WITH ASME Y14.5M-2009 DIMENSIONS ARE IN mm TOLERANCES APPLY AS SHOWN BELOW 0-10 ± 0.1 10-50 ± 0.2 50-100 ± 0.3 100-300 ± 0.4 300-1000 ± 0.5 ANGLES ± 5° SURFACE ROUGHNESS 0.8 μm		DESCRIPTION PC COVER PHANTOM PROSTATE EXTERNAL BIG	
THIRD ANGLE PROJECTION 		PART/ASSEMBLY NUMBER: XXX-YYYYY	
ENGINEER: J. JANKOWSKI AUTHORED BY: J. JANKOWSKI DRAFTED BY: J. JANKOWSKI REVISION RELEASE DATE:	DATE: N/A 28FEB2013 28FEB2013	SIZE: C SCALE: 1:1 MODEL FILENAME: pc cover phantom prostate external big 00	DRAWING NUMBER: RR-XXXXX REV: 1 SHEET 1 OF 1