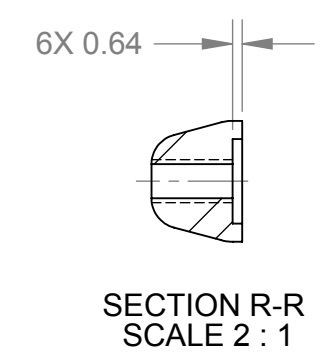
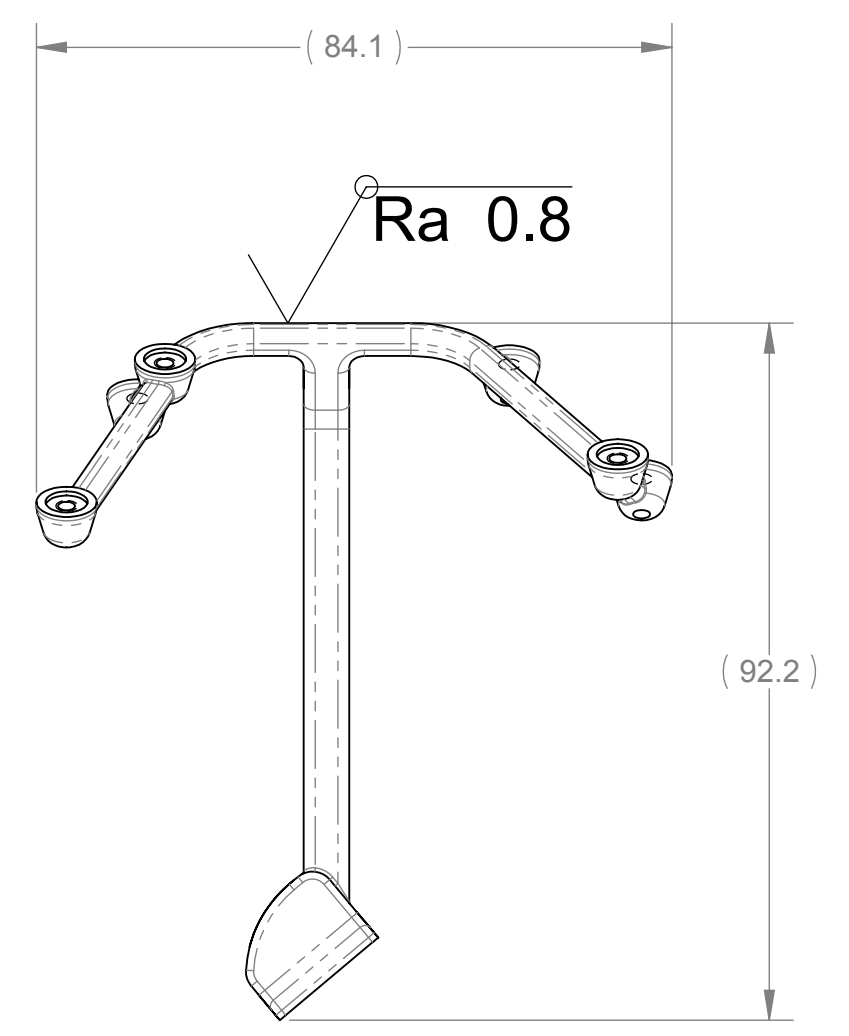
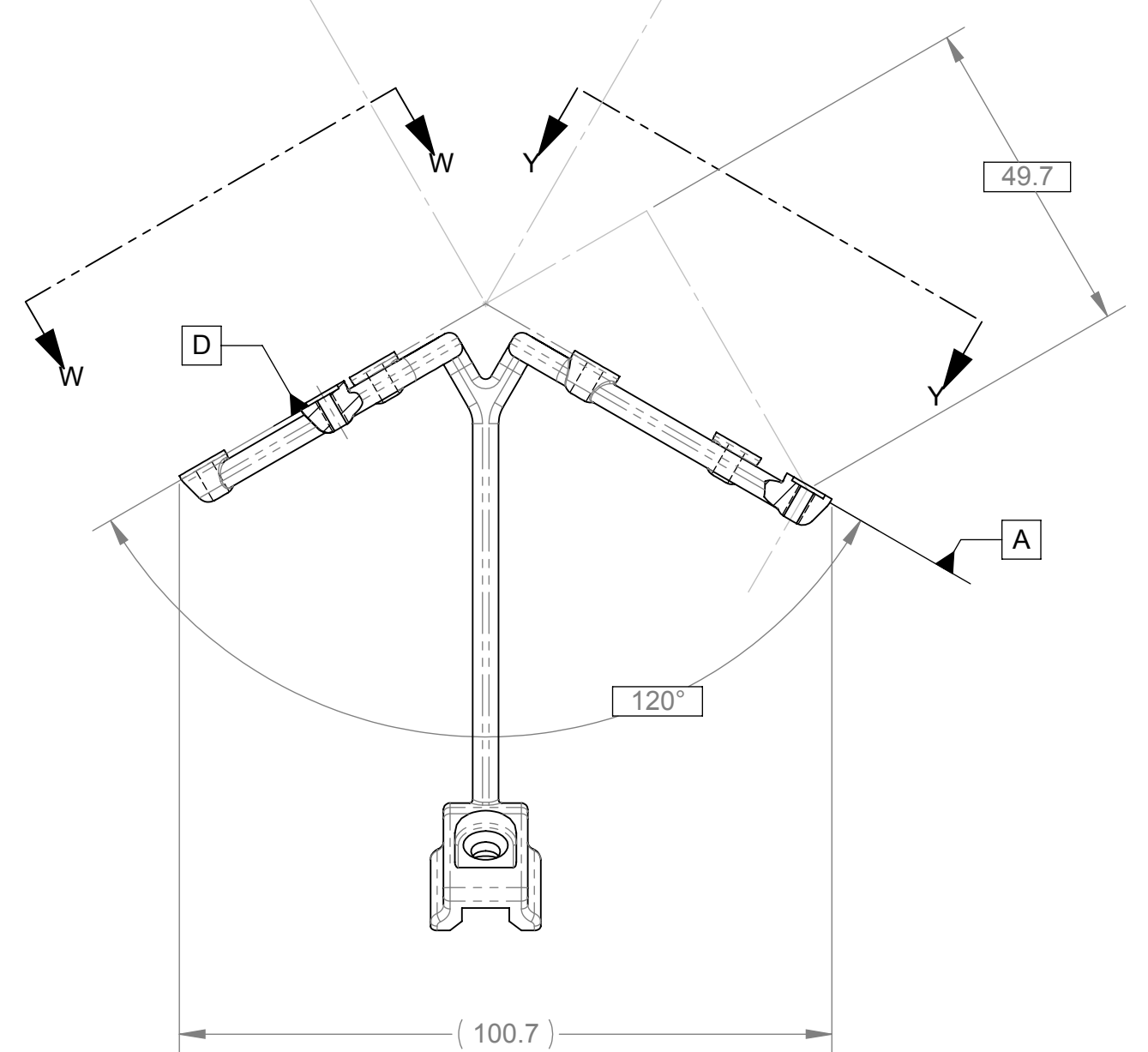
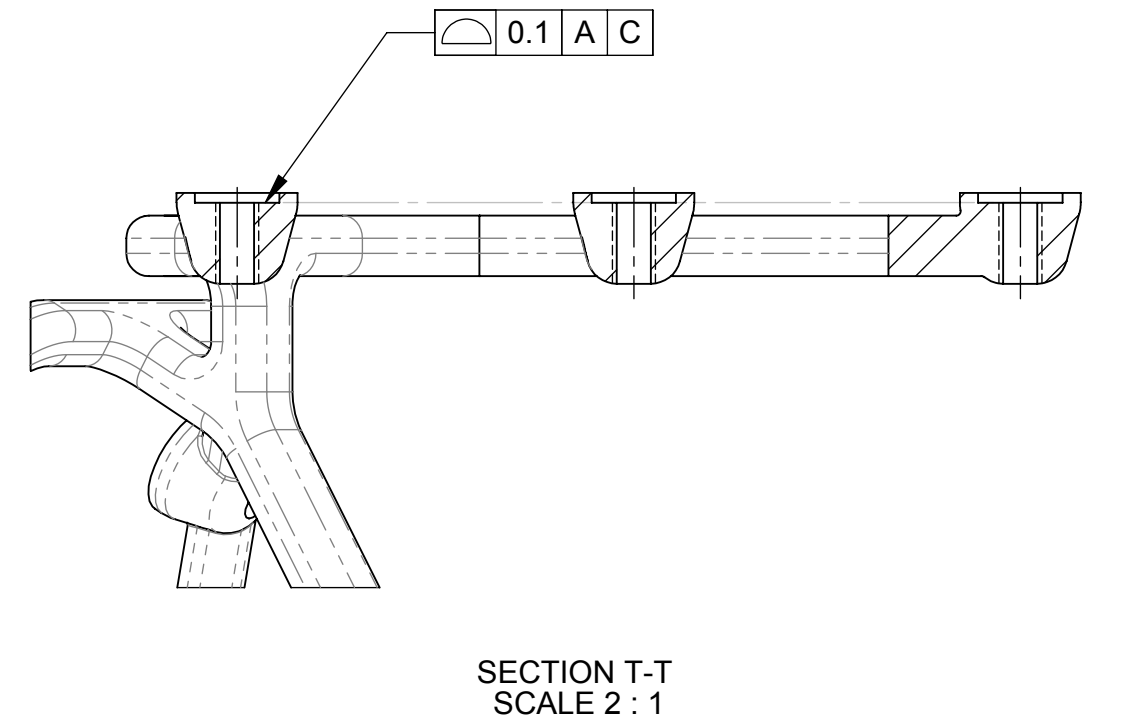
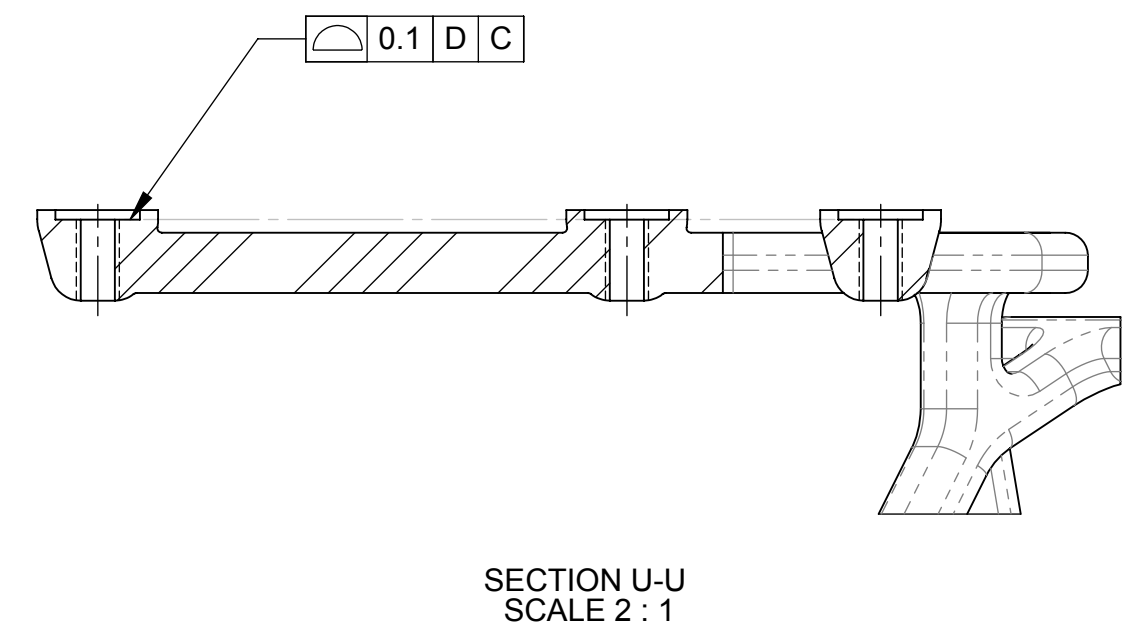
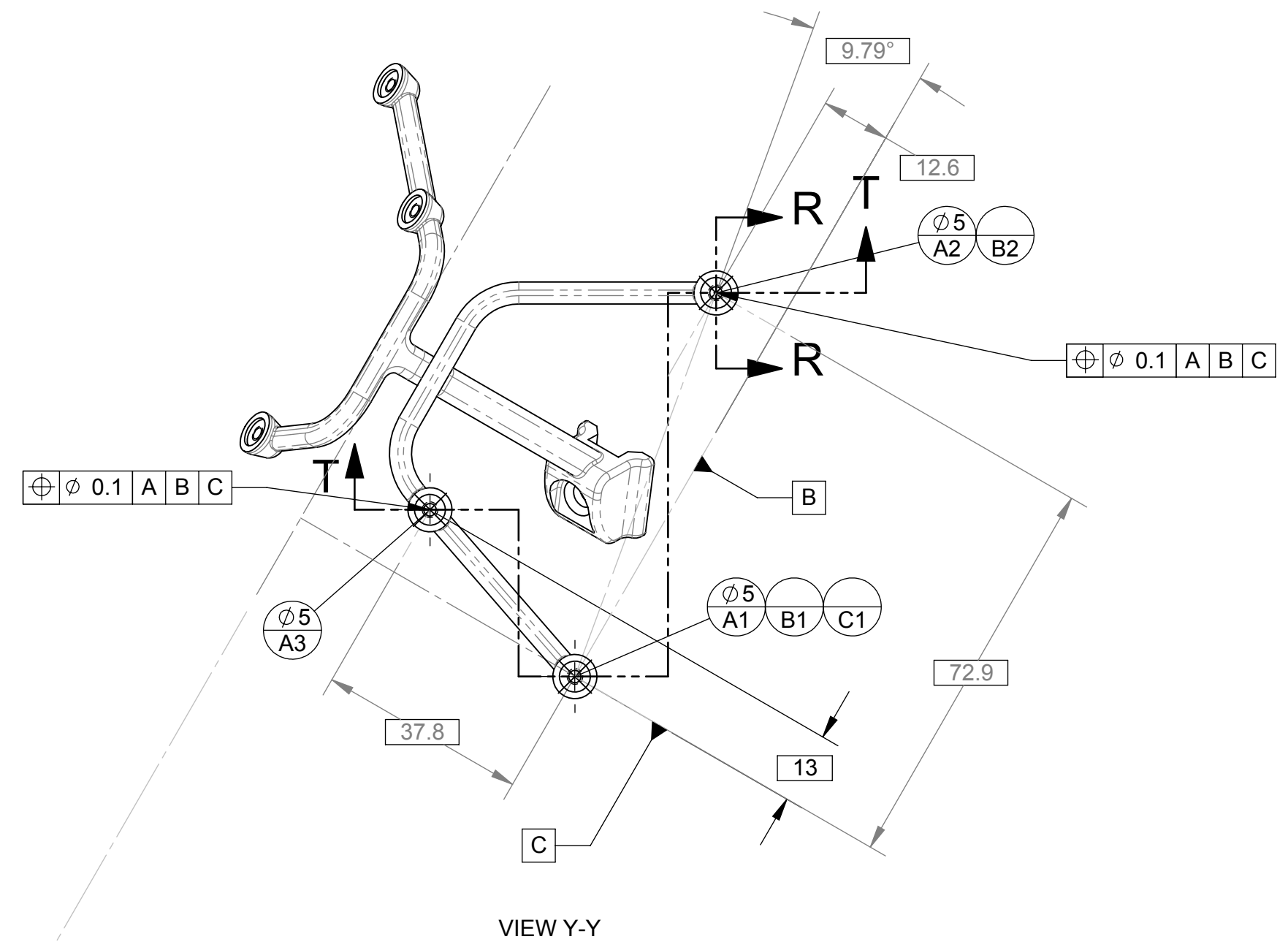
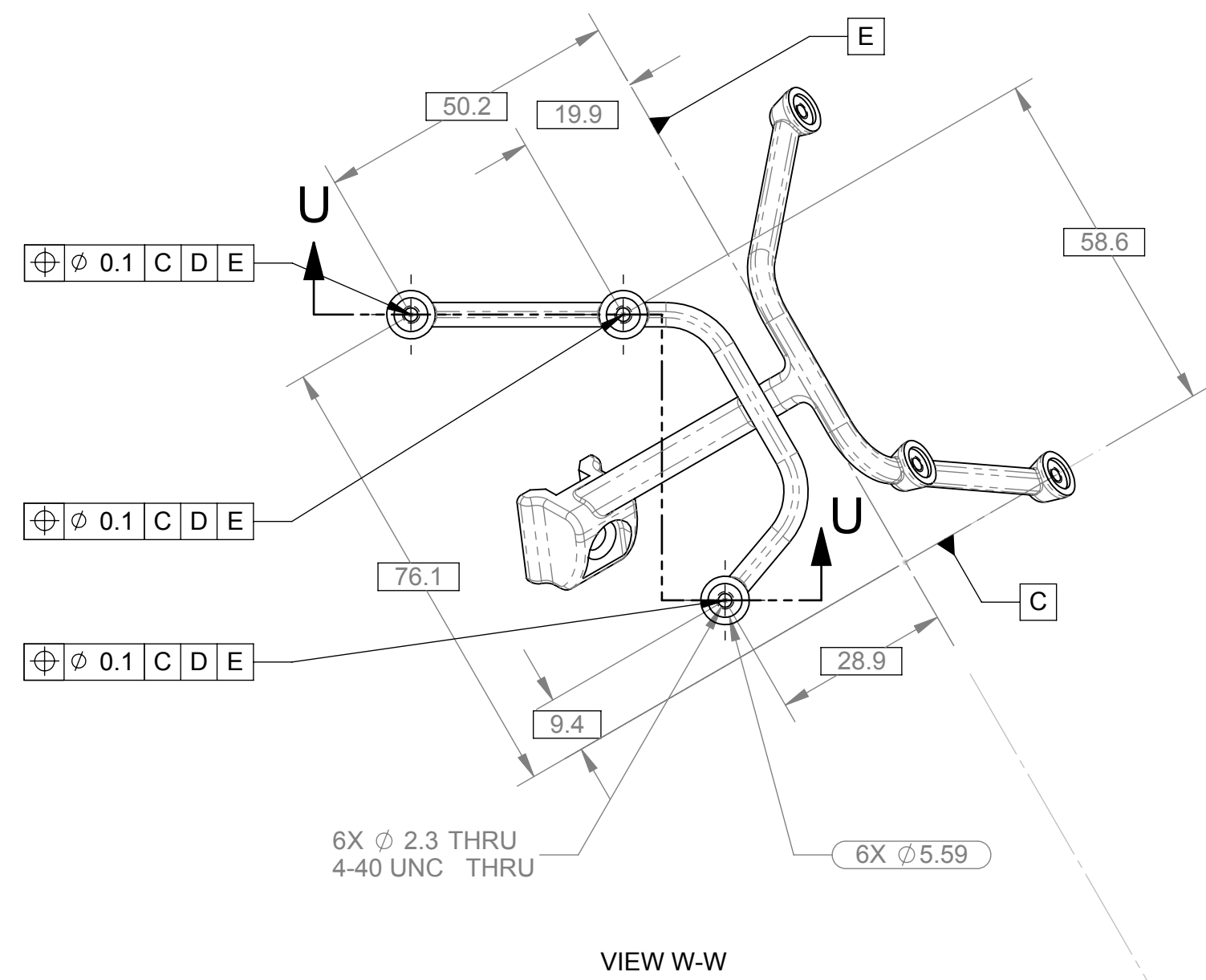


- NOTES:
 1. FOR QUOTATION ONLY
 2. MATERIAL: STAINLESS STEEL 316L
 3. NO GATES, SINKS, OR FLASH

| REVISIONS | | |
|-----------|-------------|------|
| REV. | DESCRIPTION | DATE |
| | | |



CONFIDENTIAL

| | | | | | |
|--|--|---|--|---|--|
| <p>MATERIAL RESTRICTIONS: ALL PARTS AND ASSEMBLIES SUPPLIED TO THIS SPECIFICATION SHALL BE IN FULL COMPLIANCE WITH 316/316L - MATERIAL, PROHIBITIONS AND RESTRICTIONS.</p> <p>UNLESS OTHERWISE SPECIFIED</p> <p>DO NOT SCALE DRAWING</p> <p>INTERPRET IN ACCORDANCE WITH ASME Y14.5M-1994</p> <p>EMBEDDINGS ARE IN THE TOLERANCES APPLY AS SHOWN BELOW</p> <p>10-10 ± 0.1 10-50 ± 0.2 50-100 ± 0.3 100-300 ± 0.5 300-1000 ± 0.8</p> <p>ANGLES ± 5°</p> <p>THIRD ANGLE PROJECTION</p> | | <p>THIS DRAWING EXISTS AS PART OF AN ELECTRONIC DATABASE. CHANGES SHALL BE INCORPORATED ELECTRONICALLY BY THE DESIGN ACTIVITY.</p> <p>PROPRIETARY</p> <p>THESE DRAWINGS AND SPECIFICATIONS ARE THE PROPERTY OF SENTINELLE MEDICAL, INC. AND SHALL NOT BE REPRODUCED, COPIED, OR USED FOR THE MANUFACTURE OR SALE OF APPARATUS OR DEVICES WITHOUT EXPRESS WRITTEN PERMISSION.</p> <p>DATE: 07MAR2011</p> <p>DRAWN BY: J. JANKOWSKI</p> <p>APPROVED BY:</p> | | <p>SENTINELLE MEDICAL</p> <p>SENTINELLE MEDICAL INC 555 RICHMOND STREET WEST SUITE 800, P.O. BOX 3011, MISSISSAUGA, ONTARIO, CANADA</p> <p>TITLE: TRANSDUCER ATTACHMENT SS OPTICAL</p> <p>SCALE: 1:1</p> <p>PART NO: MME-01420</p> <p>REV: 1 OF 1</p> | |
|--|--|---|--|---|--|